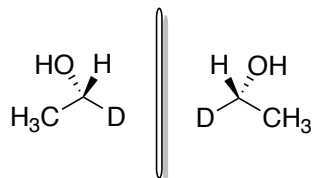


Chem 236 - Homework Assignment #3

Due October 13th, 2023 (Before Lecture Begins)

1. Draw the mirror image of the following compounds and determine their stereochemical relationship:

ex.

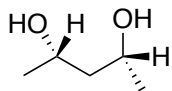


These compounds are enantiomers.

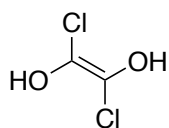
Mirror image:

Relationship:

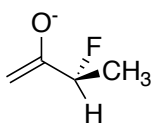
(1)



(2)



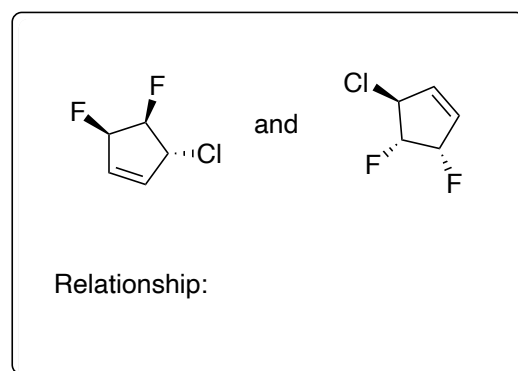
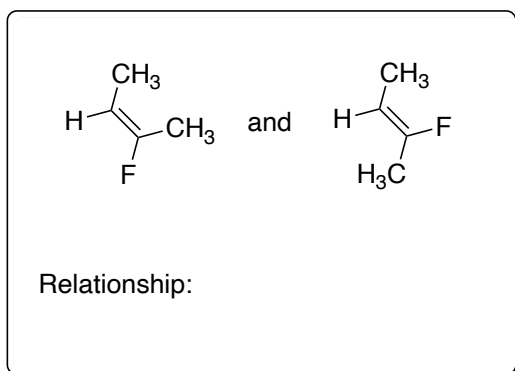
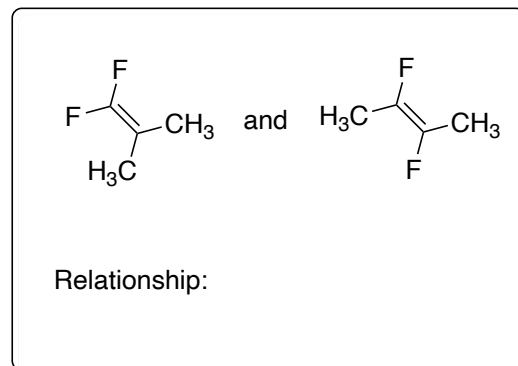
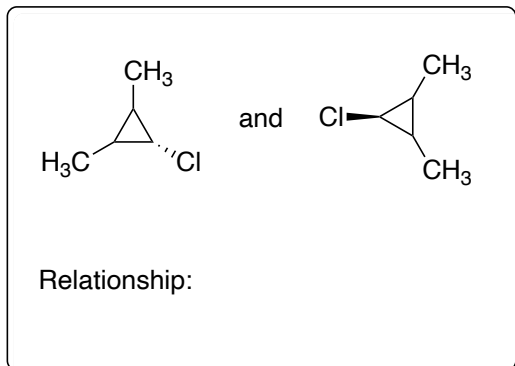
(3)



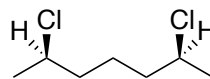
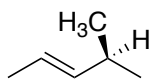
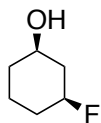
2.

(a). Identify any chiral centers in the following molecules and assign them (e.g. R or L).

(b). Are any of the paired molecules stereoisomers? If so, identify the relationship between them.



3. Determine whether each molecule is chiral or achiral:



4. Determine the relationship between each pair of molecules:

